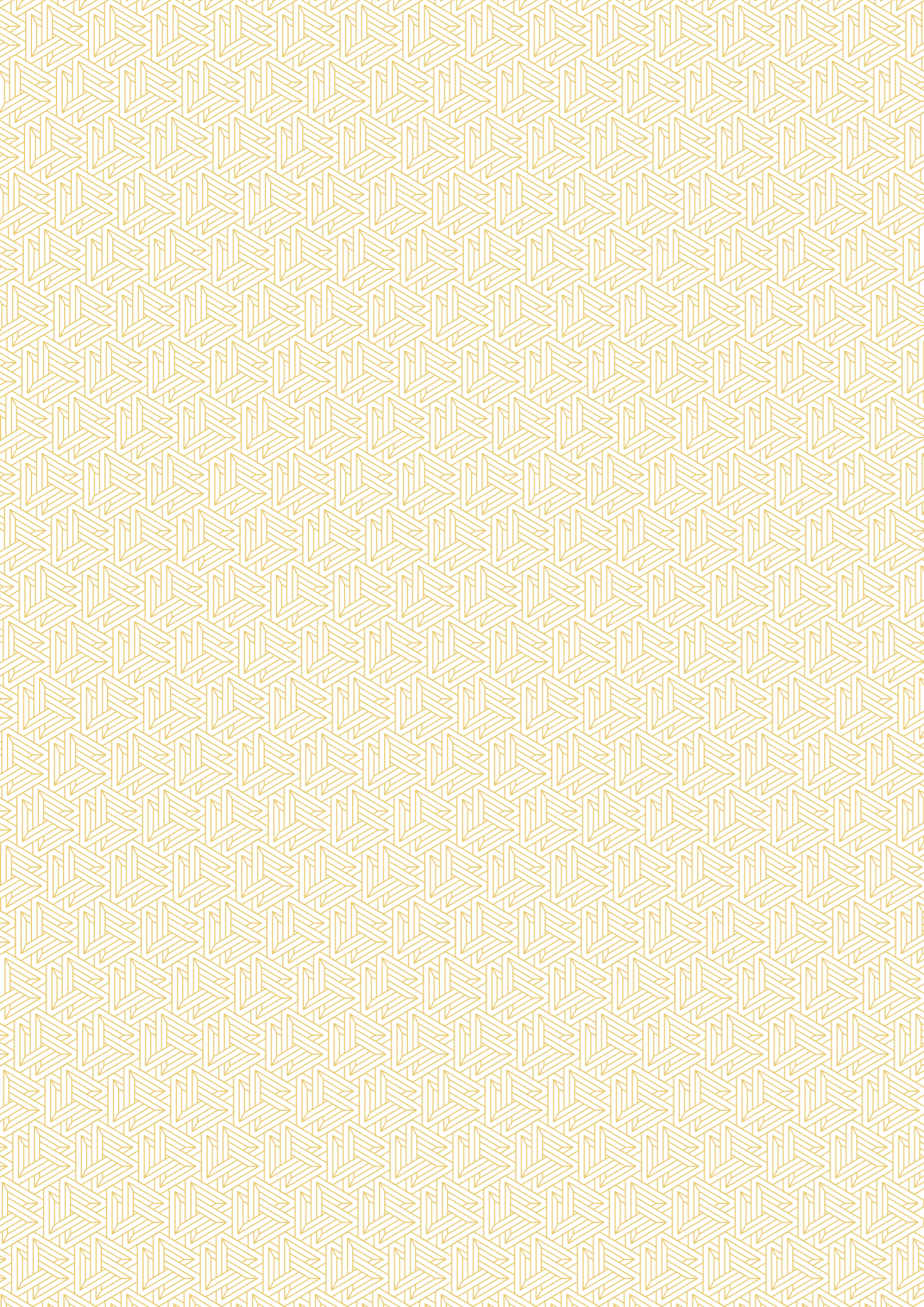




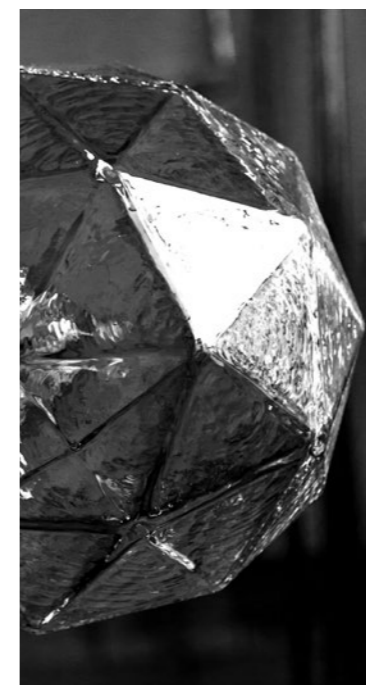
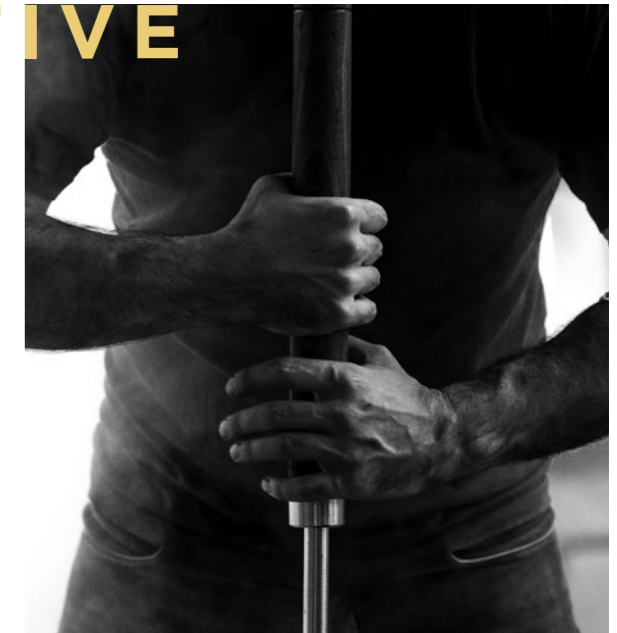
CRYSTAL  
CREATIVE




## CRYSTAL CREATIVE

We are a young, glassmaking studio that takes pride in meticulously handcrafting cut glass, objects and interior luminaires.

Our entire production process takes place in a small workshop set in the picturesque landscape of Moravian Wallachia which used to be one of the most renowned glassmaking regions in the Czech Republic.



The tradition of local glassworks dates back to 1817 when the noble family of Reich had gradually built eleven large glassworks the production of which was exported all over the world. Since then the craft of glassmaking has been passed down from generation to generation for nearly 200 years. Like many others, our parents too were employed in glassworks; thus, we have been surrounded with glass since childhood.



Our relationship to glass and glassmaking was further developed by studying at a secondary school of glassmaking and, later on, at The Academy of Arts, Architecture & Design in Prague at the studio of Prof. Rony Plesl.

In our work, we seek new, innovative approaches that combine unique glass designs and modern technologies. We like to experiment with art forms and alter the traditional and conventional methods by taking a unique approach to glassmaking.

Working with glass is like witnessing a small miracle. Its infinite forms, shapes and methods of processing are a constant source of amazement to us. Thanks to its unique properties, glass can both transmit light emphasizing its colour and reflect, or block it; That is why, to us, glass is the most amazing creative tool of artistic expression.

Our work is based on the tradition and quality of Czech crystal glass. We use time-honored glass working methods such as blowing, cutting, slumping and fusing. All our products are handcrafted on a small scale, which makes every single piece a true original – a unique work of art for your designer interior.



**Structure Bowl**

hand blown & hand cut  
l 50 cm, w 31 cm, h 18 cm  
colour: topaz, blue, brown, red,  
green, violet  
design: Dobias/Gabera  
No. 054

**Structure Vase**

hand blown & hand cut  
large: h 40 cm, d 21 cm  
small: h 24 cm, d 17 cm  
colour: topaz, blue, brown, red,  
green, violet  
design: Dobias/Gabera  
No. 028, 029





**Coco Chanel**  
hand blown & hand cut vase  
h 26 cm, d 20 cm  
colour: aquamarine, blue, brown,  
citrine, topas, red ruby  
design: Filip Dobias  
No. 024



**Moon Table**

cast glass, cut and polished on metal construction

h 70 cm, d 75 cm

design: Filip Dobias/Jakub Petr

No. special edition

Note: the mould was 3D machined to replicate the actual surface of the Moon.



**Lotos**

hand blown & hand cut vase  
h 40 cm, d 21 cm  
colour: aquamarine, crystal,  
orange, topas, red  
design: Filip Dobias  
No. 023



**Mythos & Logos**

hand blown & hand cut vase  
h 85 cm, d 30cm  
colour: crystal  
design: Dobias/Gabera  
No. 023



**Sunflower Vase**

hand blown & hand cut  
h 47 cm, w 22 cm, l 10 cm  
colour: brilliant  
design: Filip Dobias  
No. 062



**Sunflower Plate**

hand blown & hand cut  
large: d 48–50 cm, h 7 cm  
small: d 38–40 cm, h 6 cm  
colour: brilliant, green  
design: Filip Dobias  
No. 057





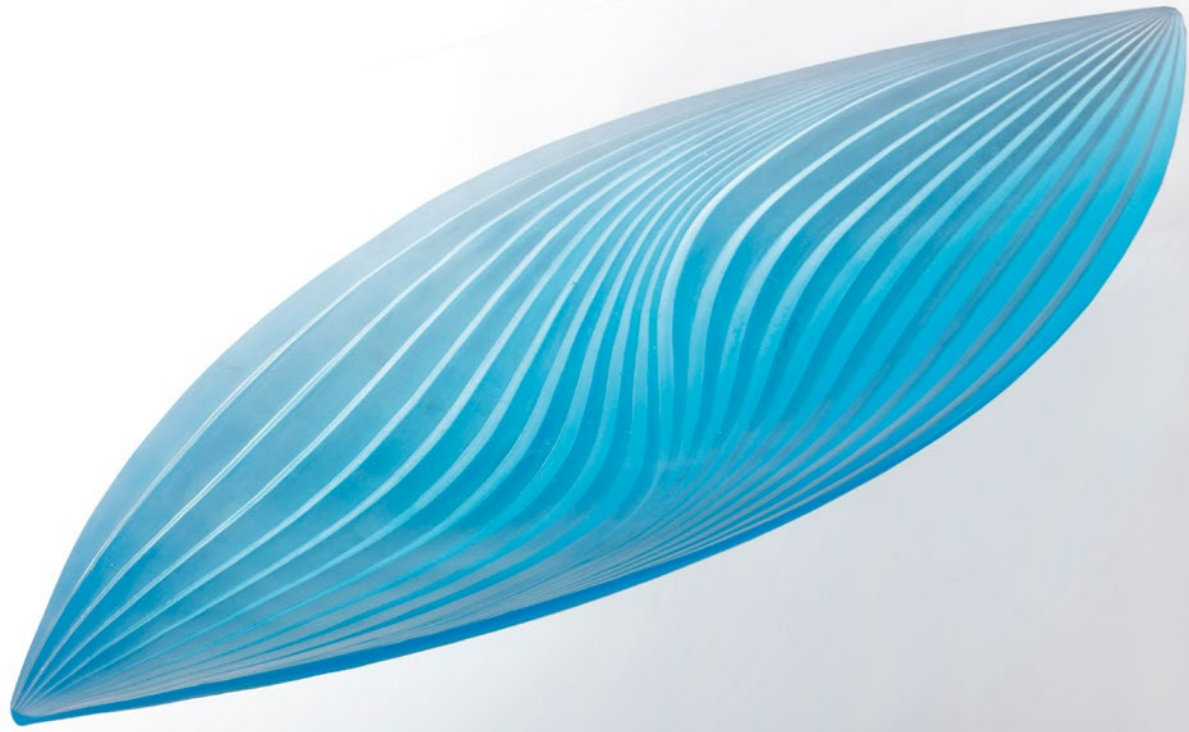
**Matrix Vase**

hand blown & hand cut  
h 40 cm, d 21 cm  
colour: sea green  
design: Dobias/Gabera  
No. 061



**Notch**

hand blown & hand cut object  
h 17 cm, d 19 cm  
colour: crystal/erbium,  
crystal/alexandrite  
design: Gabera/Dobias  
No. 034



**Between the Rivers**

cast glass, hand cut  
l 58 cm, w 24 cm, h 4.5 cm  
colour: sky blue, uranium  
design: Filip Dobias  
No. 063



**Berylium Vase and Bowl**

hand blown & hand cut  
vase: h 25.5 cm, d 20 cm  
bowl: h 10 cm, d 18 cm  
colour: violet, crystal  
design: Jakub Petr  
No. 067



**Margot**

hand blow & hand cut votives  
with scented candles made  
from eco-friendly wax  
small: h 8 cm, d 8 cm  
large: h 10 cm, d 10 cm  
colour: crystal, blue, brilliant,  
sea green, pink, smoke grey  
design: Dobias/Gabera  
No. 065, 066

**Lines**

hand blown & hand cut set

vase: h 34 cm, d 16 cm

bowl: h 17 cm, d 27 cm

plate: h 8 cm, d 34 cm

colour: brilliant, crystal

design: Filip Dobias

No. 035, 036, 037



**Naoshima**

hand blown & hand cut vase on a marble plate

h 20 cm, d 25 cm

colour: dark purple

design: Filip Dobias

No. 031



**Isamu Noguchi**

handmade crystal vase

h 30 cm, d 18 cm

colour: crystal

design: Filip Dobias

No. 022



**Toyen Vase**

hand blown & hand cut  
large: h 24 cm, d 18.5 cm  
small: h 17 cm, d 13 cm  
colour: steel blue  
design: Filip Dobias  
No. 051, 052



**Tornado**

hand blown & hand cut whisky set  
decanter: 0.7 l  
glasses: 250 ml  
colour: crystal, smoke grey  
design: Filip Dobias  
No. 003, 004

**Volcano**

hand blown & hand cut whisky set  
decanter: 0.7l  
glasses: 250 ml  
colour: crystal, gold ruby, smoke grey  
design: Filip Dobias  
No. 006



**Pisa**

hand blown & hand cut whisky set  
decanter: 0.7l  
glasses: 250 ml  
colour: crystal  
design: Filip Dobias  
No. 038/039



**Stripes**

hand blown carafe and glasses

h 40 cm/20 cm

colour: smoke grey

design: Jakub Petr

No. 041, 042



**La Nuit**

hand blown wine set

colour: crystal

design: Filip Dobias

No. 014, 015, 016, 017, 018





**Twist Vase**

hand blown & hand cut  
h 24 cm, d 17 cm  
colour: brown, purple, blue  
design: Filip Dobias  
No. 058

**Space Odyssey**

hand blown & hand cut  
h 40 cm, d 21 cm  
colour: sea green & opal,  
uranium, green & opal  
design: Filip Dobias  
No. 056



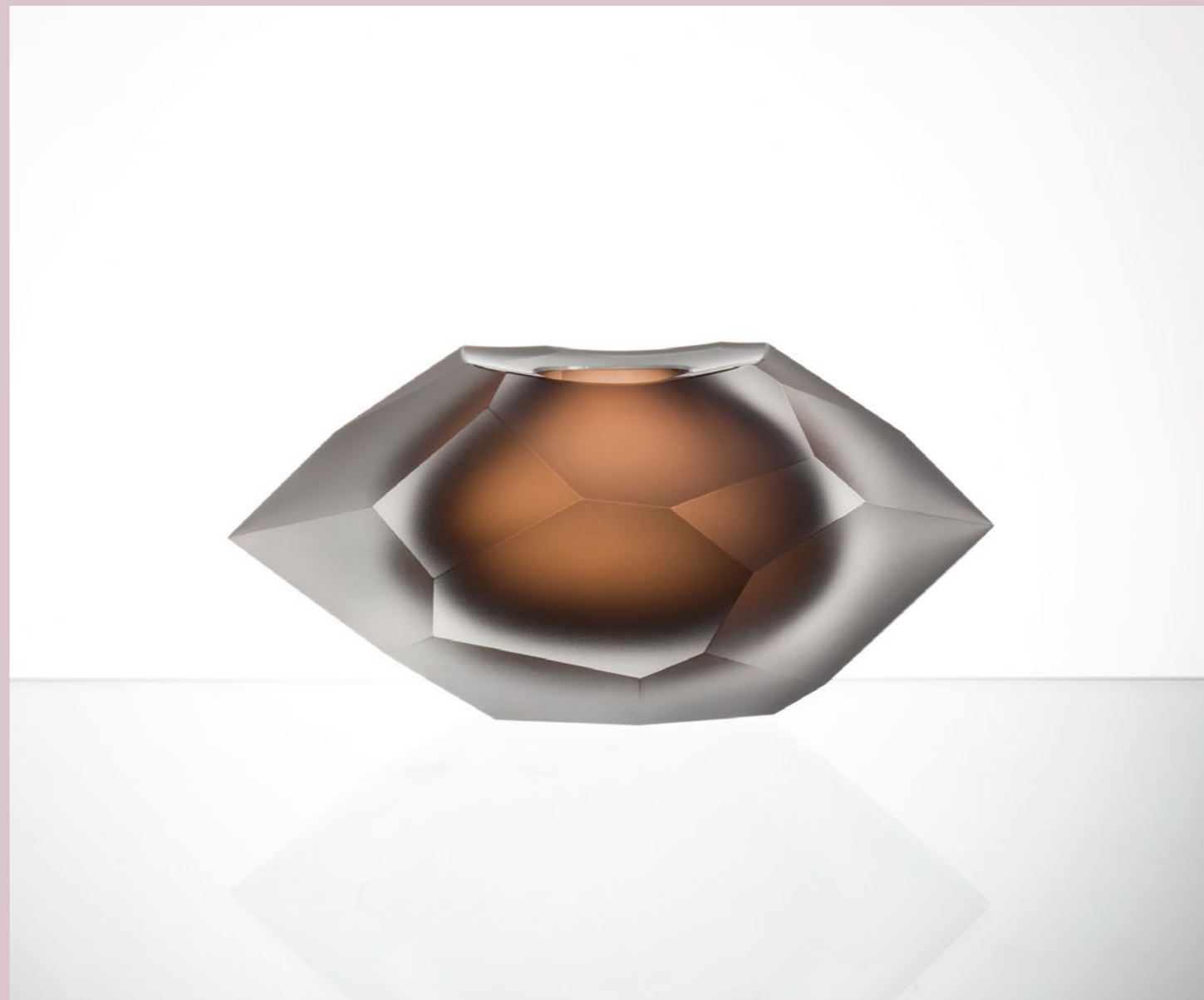


**Circle X**

hand blown & hand cut vase  
large: h 26,5 cm, w 29 cm, l 11 cm  
small: h 18 cm, w 19 cm, l 7 cm  
colour: crystal, crystal/violet  
crystal/orange  
design: Jakub Petr  
No. 043

**Quark**

cut object  
h 15 cm, w 30 cm, l 15 cm  
colour: crystal/brown, crystal/dark red,  
crystal/sea green, crystal/dark blue  
design: Dobias/Gabera  
No.60





**Anthropoda**  
hand blown and hand cut bowl, silvered.  
large: d 34 cm, h 8 cm  
medium: d 28 cm, h 6.5 cm  
small: d 26 cm, h 6.5 cm  
Colour: Brown/silver, brilliant/silver,  
red/silver, blue/silver, green/silver  
design: Filip Dobias  
No. 071, 072, 073

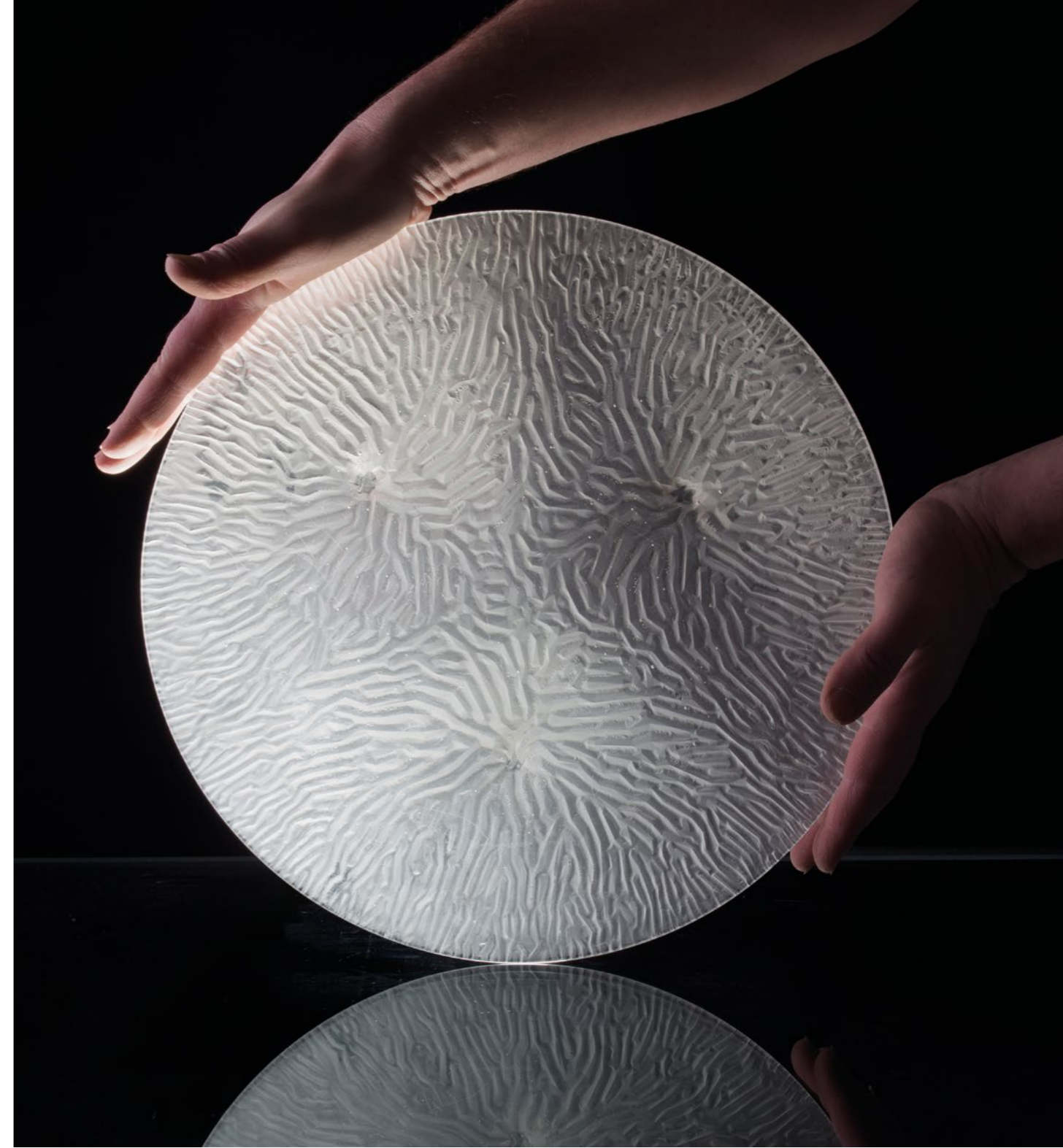


**Parabolic**  
composite bowl (glass & silicone)  
d 30 cm, h 6 cm  
colour: crystal, crystal/gold plating  
design: Jakub Petr  
No. 046





▲  
**Blended Colours Vase**  
 hand blown  
 h 22 cm, d 14 cm  
 colours: green/opalin, aquamarine/blue, blue/fuchsia, violet/fuchsia, blue/opalin  
 design: Jakub Petr  
 No. 067



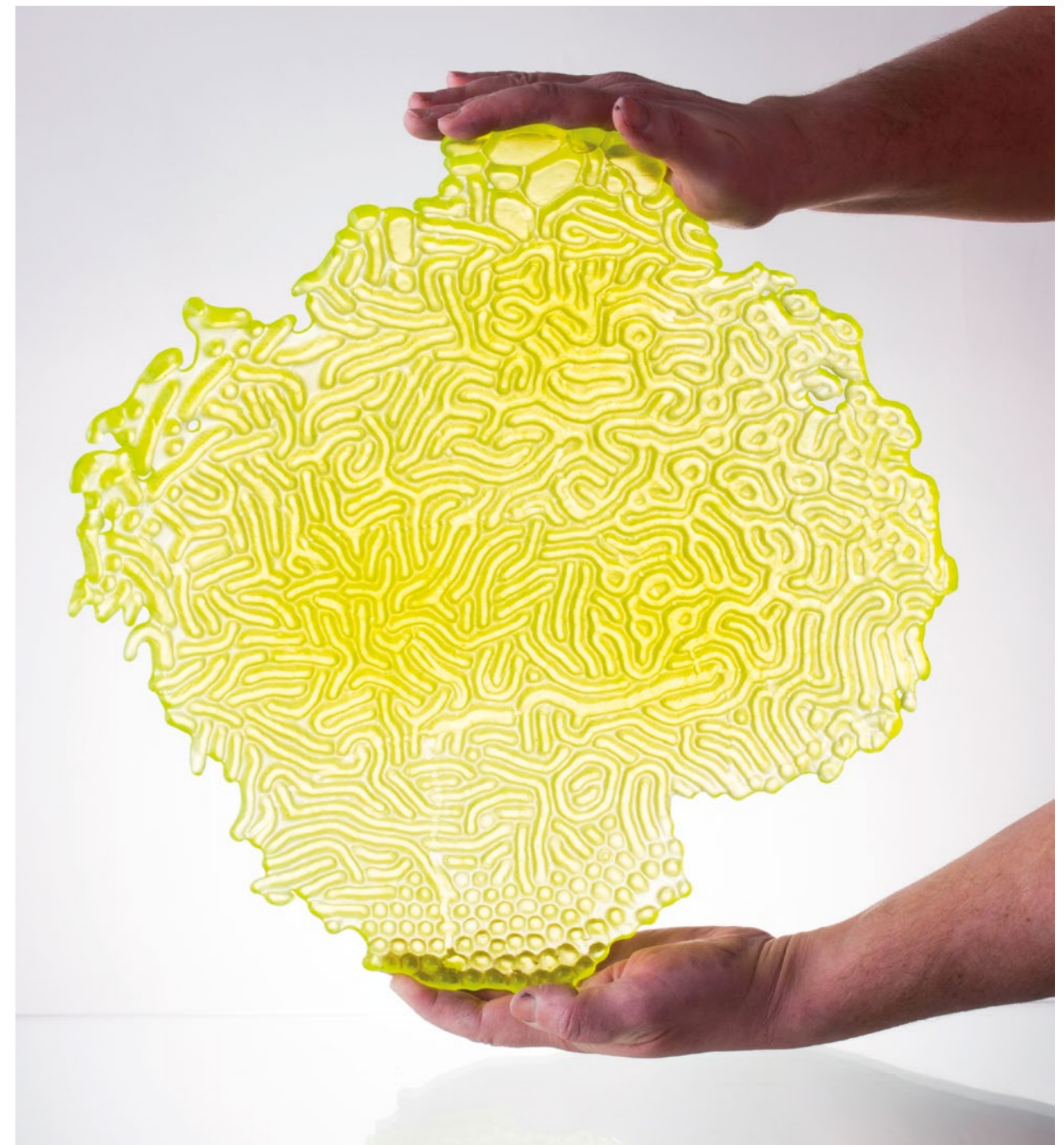
▲  
 ◀ **Organic Growth 1**  
 cast glass, hand cut bowl  
 d 33.5 cm, h 5 cm  
 colour: crystal, uranium, blue  
 design: Jakub Petr  
 No. 069



**Crust**  
hand blown & hand cut votive  
h 15 cm, d 14 cm  
colour: crystal  
design: Jakub Petr  
No. 047



**Organic Growth 2**  
cast glass blended in furnace  
d 41 cm, h 5 cm  
colour: uranium, coral red  
design Jakub Petr  
No. 070





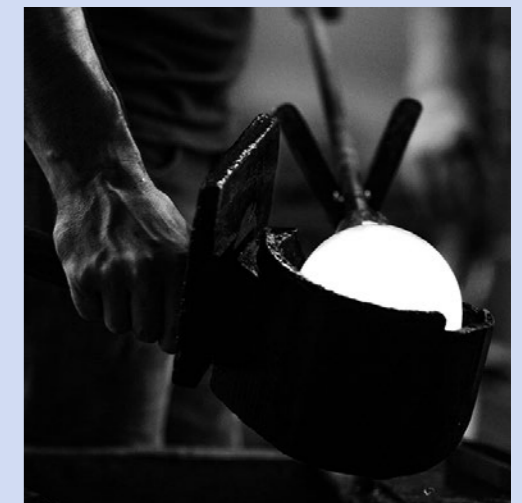
**Natali**

hand blown & hand cut votives  
h 10 cm, d 12,5

colour: uranium, citrine, topas, rosaline,  
red ruby, smoke grey, sapphire, green,  
aquamarine, alexandrid

design: David Gabera

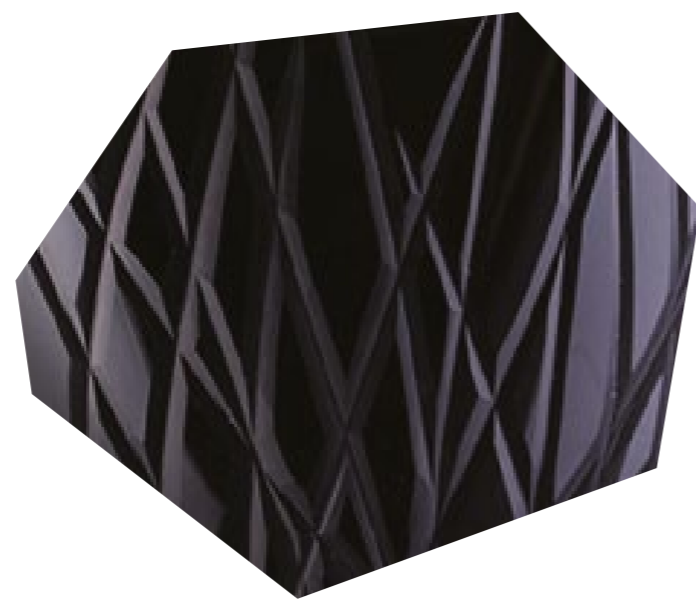
No. 026, 027





**Un-Deux-Trois**

hand blown & hand cut vases  
with titanium plating  
large: h 27 cm, d 19 cm  
medium: h 16 cm, d 21.5 cm  
small: h 14 cm, d 16 cm  
colour: aquamarine, black,  
gold ruby, topas,  
design: Filip Dobias  
No. 009, 010, 011





**H<sub>2</sub>O**  
 hand blown & hand cut drinking set  
 carafe: 0.7 l, glasses: 250 ml  
 colour: aquamarine, crystal, rosalin  
 design: Filip Dobias  
 No. 001, 002

### Coloured Glass Rods

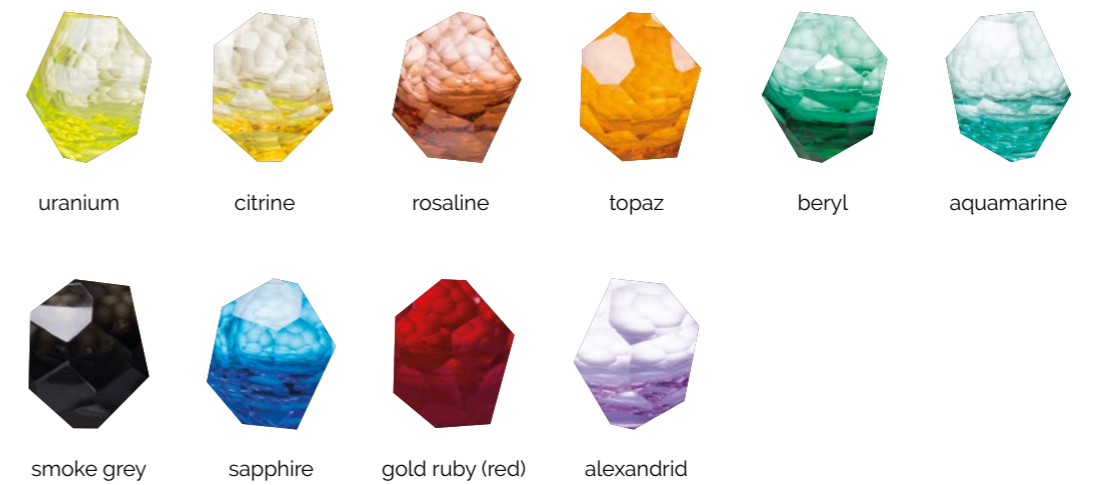
These colours and their combinations are based on the Riechenbach and Kugler colour catalogue. We use glass rods in the production of larger glass pieces, offering us a greater variability of shade and colour combinations. Thanks to this, we are able to satisfy client's colour requirements after prior agreement.

Working with glass rods also enables the creation of seamless color gradients going from a rich shade to clear crystal (seen the Structure set). The saturation of the shade is determined by the amount of color applied by the glassblower, resulting in slight variations in color intensity between individual handmade pieces.



### Colours Melted in Glass Furnace

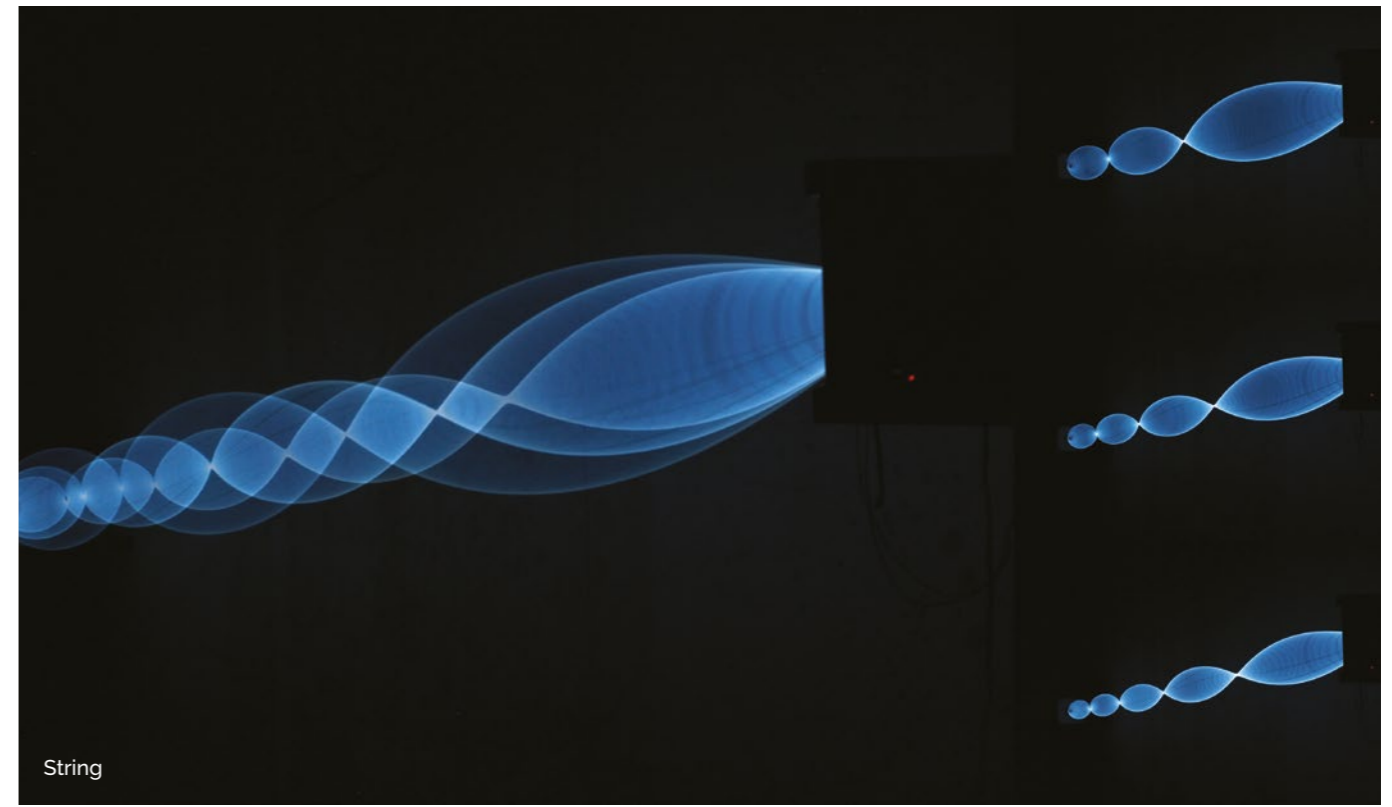
In our glassworks, we can also melt coloured glass directly in the furnace (see the colour chart). This technique is more suitable for larger orders where the client requires colour stability and consistency.



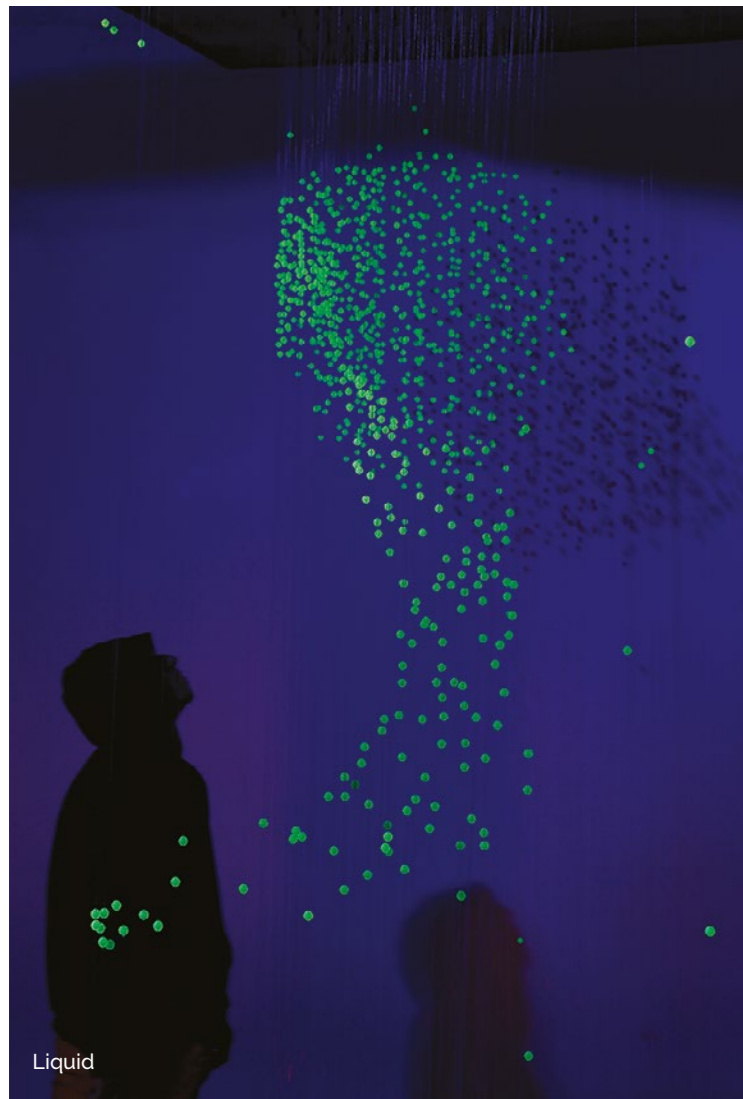




DNA Exhibition 2022



String



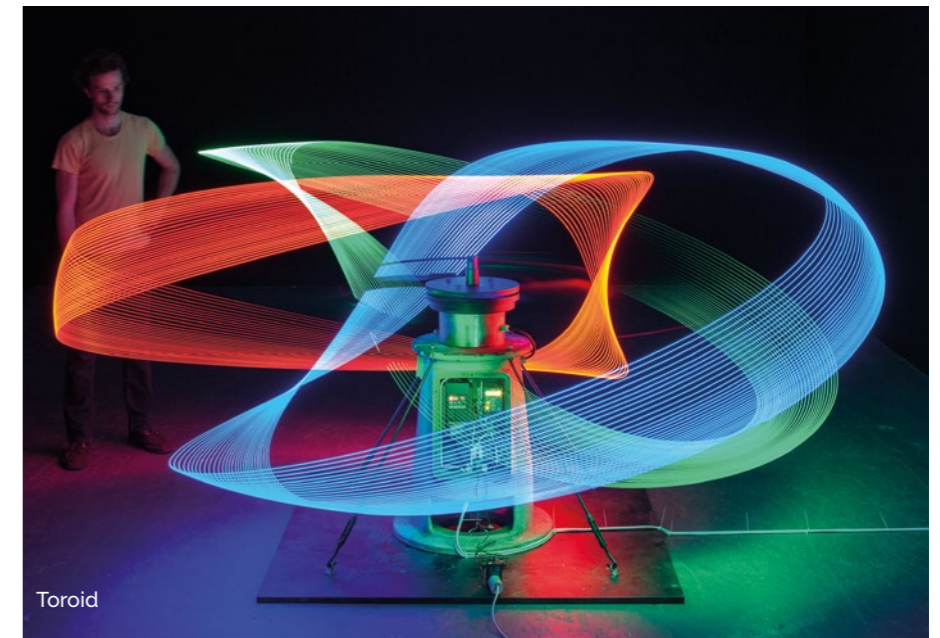
Liquid



Aquarel Light



Cubes (stained glass wall)



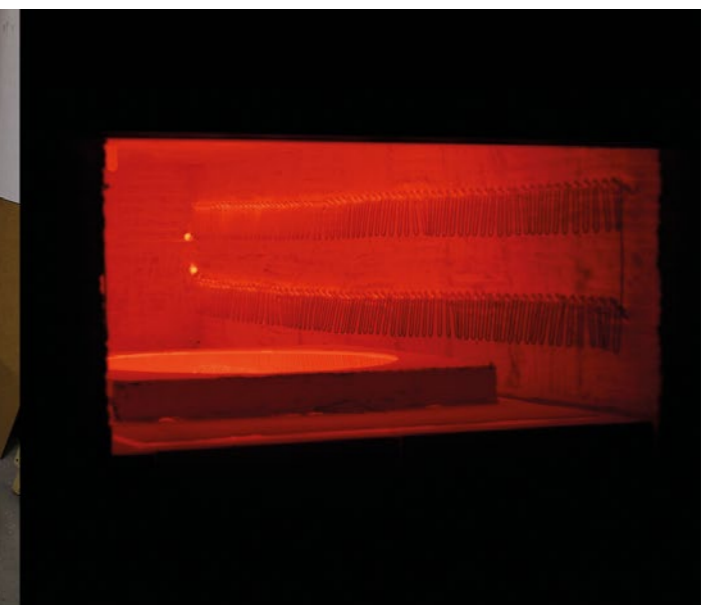
Toroid



Deterministic Chaos



Moon Table manufacturing process





+420 608 039 557  
[design@crystal-creative.cz](mailto:design@crystal-creative.cz)  
[www.crystal-creative.cz](http://www.crystal-creative.cz)



**MgA. Filip Dobias**



**David Gabera**



**MgA. Jakub Petr**

